

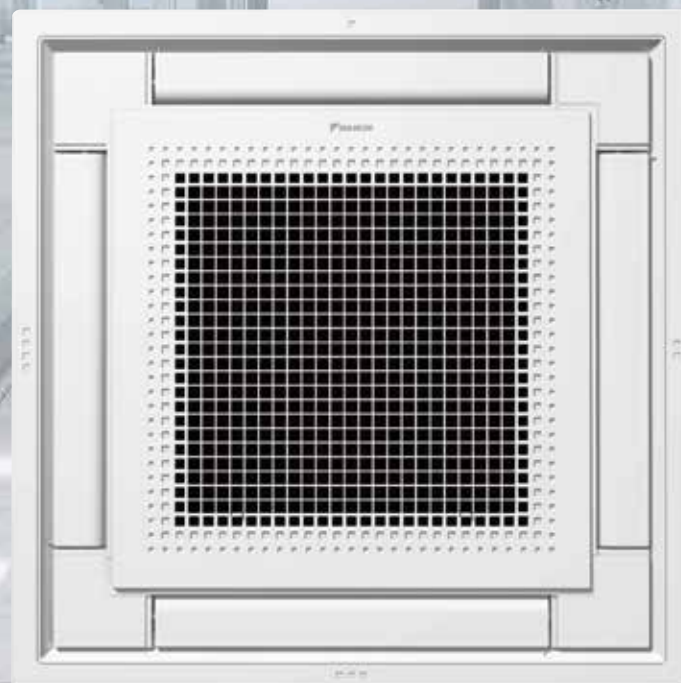
# SkyAir

## Air Conditioning System

HEAT PUMP [50Hz]

---

### Compact Multi Flow Ceiling Mounted Cassette Type



**R-32**

# Fully flat cassette, a remarkable blend of iconic design and engineering excellence



**NEW**

**FFA25 / 35 / 50 /  
60 / 71AVM**

**Option** Accessory required for indoor unit.

- Navigation remote controller (Wired) \*1



**"Nav Ease"**  
**BRC1E63**

- Stylish remote controller (Wired) \*1



White  
**BRC1H61W**

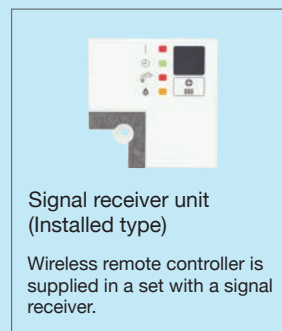


Black  
**BRC1H61K**

- Wireless remote controller \*2



Heat pump  
**BRC7M530W**



Note:

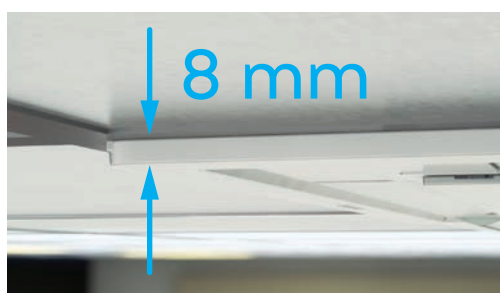
\*1 Remote controller cable is not included and must be obtained locally.

Note:

\*2 A signal receiver must be added to the indoor unit.

## Fully Flat with the Ceiling

- Fully-flat integration in standard architectural ceiling tiles, leaving only 8 mm



## Fits Architectural Ceiling Tiles Perfectly

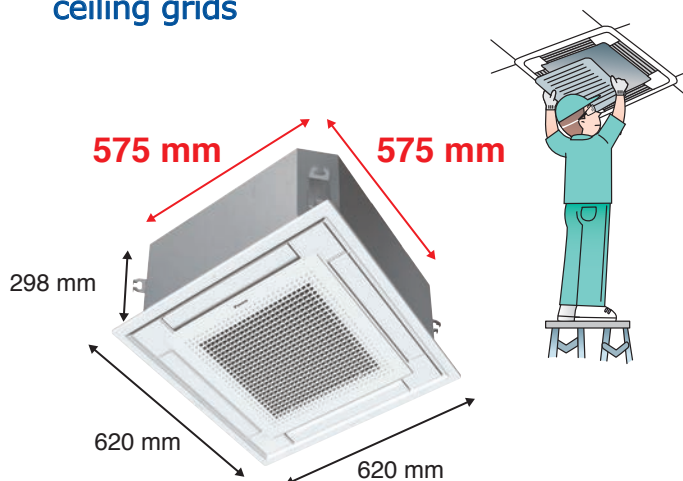
- The newly designed panel integrates fully within one ceiling tile enabling lights, speakers and sprinklers to be installed in the adjoining ceiling tiles.



Unobtrusive  
cassette

## Compact

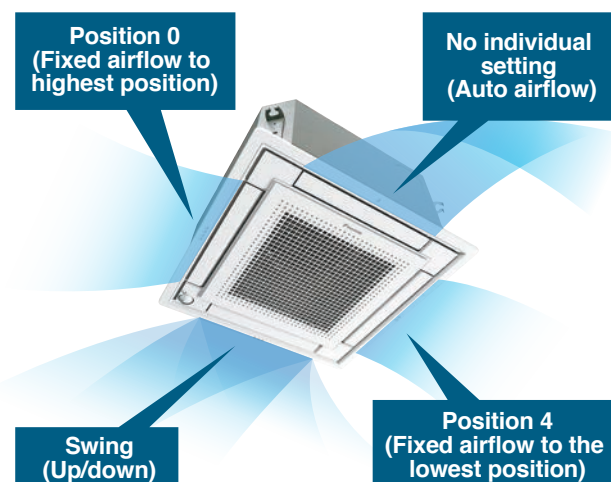
- Sized to fit inside 600mm wide ceiling grids



## Individual airflow direction control <sup>\*1</sup>

\*1. Applicable when wired remote controller is used.

- Airflow direction can be individually adjusted for each air discharge outlet to deliver optimal air distribution.



## Sensing technology <sup>\*1, 2</sup>

\*1. Applicable when wired remote controller is used.

\*2. Applicable when optional sensor kit (BRYQ60AAW) is used.

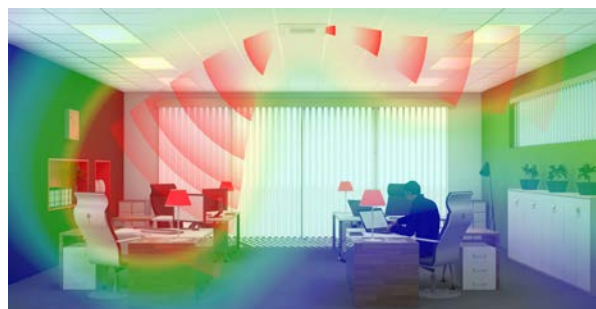
- Dual sensors (Option)

- An optional presence and floor sensor kit can be fitted to the cassette for draft prevention, energy-saving operation, and to provide optimal control of airflow.



- Draft prevention (Default: OFF)

- When human presence is detected, drafts are prevented by making the flap horizontal.



- Sensing sensor low / stop mode (Default: OFF)

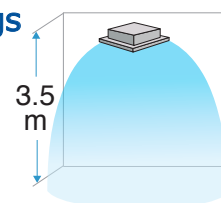
- When there are no people in a room, the set temperature is shifted or the system stops automatically for energy saving.

## Comfort

- Suitable for high ceilings

Even in spaces with high ceilings, a comfortable airflow is carried down to the floor level.

\*Field setting with remote controller.



- Optimal comfort and convenience

	Auto-swing	5-levels air direction setting
Standard setting		
Draft prevention setting (Field setting)		
Setting to prevent soiling of ceiling (Field setting)		

- Selectable airflow pattern

4-way flow	3-way flow	2-way flow

■ Drain socket    □ Piping    ■ Sealing material (Option)

\*For 3-way or 2-way flow, the sealing material of air discharge outlet (option) must be used.

\*Field setting with remote controller.



## Wired remote controller "Nav Ease"



**BRC1E63**

### Energy saving

#### Setpoint auto reset

- Even if the set temperature is changed, the new set temperature returns to the previous preset value after a preset duration of time.
- Period selectable from 30, 60, 90, or 120 min.

#### OFF timer (programmed)

- Sets and saves setting for an increment of time that automatically turns OFF air conditioner after a preset period of time for each time operation starts.
- Period can be preset from 30 to 180 minutes in 10-minute increments.

#### Setpoint range set

- Saves energy by limiting the min. and max. set temperature.
- Avoids excessive heating or cooling.
- This function is convenient if the remote controller is installed where anyone can change the settings.

### Convenience

#### Setback (default: OFF)

- Maintains the room temperature in a specific range during unoccupied periods by temporarily starting an air conditioner that had been turned OFF.

#### Auto display off

- While operation is stopping, LCD display can be turned OFF. It will be displayed again if any button is pressed.
- Period can be preset from 10, 30, 60 minutes, and OFF. Initial setting is 30 minutes.

#### Multilingual display

- Display is available in 11 languages.  
(English, German, French, Spanish, Italian, Portuguese, Greek, Dutch, Russian, Turkish, and Polish).

#### Weekly schedule

- 5 actions per day can be scheduled for each day of the week.
- The holiday function will disable schedule timer for the days that have been set as holiday.
- 3 independent schedules can be set. (e.g. summer, winter, mid-season)

#### Energy consumption monitoring <sup>\*1,2,3,4</sup>

- Past power consumption for the current and previous days (2-hour intervals), week (1-day intervals), and year (1-month intervals) can be checked.

Note:

<sup>\*1</sup>Availability of this function may vary according to model (limited to partial functionality)

<sup>\*2</sup>Time setting is necessary.

<sup>\*3</sup>This function cannot be used during group control.

<sup>\*4</sup>This is a reference value for comparison and is not intended as a value for investigation purposes in the calculation of electricity bills or contract for electricity. Because it is a simple calculation of power consumption, there are cases when the calculated value differs with the measurement results of a wattmeter.

## NEW Stylish remote controller (Wired)



White  
**BRC1H61W**



Black  
**BRC1H61K**

### Sleek Stylish Design

Much like the perfection of its circular shape, the remote controller gives you perfect control over your individual climate.



### User-friendly Interface

The new remote controller combines functionality and simplicity. The minimalistic touch button control enlarges the display and makes the remote controller both easy and enjoyable to use.



Operation mode  
(Cooling, Heating, Auto, etc.)

Fan speed

Airflow direction

## Wireless remote controller



Heat pump  
**BRC7M530W**



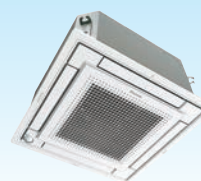
Signal  
receiver unit

- The wireless remote controller is supplied in a set with a signal receiver.
- Signal receiver unit of installed type is contained inside decoration panel or indoor unit.

# Functions overview

Heat pump

COMPACT MULTI FLOW CEILING MOUNTED  
CASSETTE TYPE



FFA25-71AVM

RZAC25-71EVM

		Indoor unit		
		Outdoor unit		
		Remote controller	Wired	
			Wireless	
			BRC1E63	
				BRC7M530W
Energy Saving	1	Energy consumption monitoring *1	●	
	2	Sensing sensor stop mode *1	● Sensor kit	
	3	Sensing sensor low mode *1, 2	● Sensor kit	
	4	Auto display OFF *1	●	
	5	Setpoint auto reset *1	●	
	6	Setpoint range set *1	●	
	7	OFF timer (programmed) *1	●	
	8	Weekly schedule timer *1	●	
	9	ON/OFF timer		●
Comfort	10	Setback *1	●	
	11	Individual airflow control *1	●	
	12	Infrared presence sensor		● Sensor kit
	13	Infrared floor sensor		● Sensor kit
	14	Auto airflow function (Direct air, Draft prevention) *1	● Sensor kit	
	15	Auto swing	●	●
	16	Swing pattern selection	●	●
	17	Draft prevention function (heating)		●
	18	Switchable fan speed	● 3 step	● 3 step
	19	Auto airflow rate	●	●
	20	Two selectable temperature-sensors *3	●	
	21	High ceiling application	● 3.5m	● 3.5m
	22	Hot start		●
	23	Year-round cooling applicable		●
Cleanliness	24	Anti-bacterial air filter		●
Work & Servicing	25	Drain pump mechanism		●
	26	Pre-charged for up to 10 m *4		●
	27	Long-life filter		●
	28	Filter sign	●	●
	29	Low gas pressure detection *4		●
	30	Self-diagnosis function	●	●
	31	Service contact display *1	●	
Control	32	Auto-restart		●
	33	Auto-cooling / heating change-over	●	●
	34	Control by 2 remote controllers	●	● *6
	35	Group control by 1 remote controller	●	●
	36	External signal forced OFF and ON/OFF operation		●
	37	External command control *5		●
	38	Central remote control		●
	39	Interlock control with Heat Reclaim Ventilator		●
	40	DIII-NET communication standard		●
Options	41	Fresh air intake kit		●

Note:

\*1: Applicable when BRC1E63 is used

\*2: Not applicable when group control

\*3: Applicable when wired remote controller is used.

\*4: For outdoor units

\*5: Wiring adaptor for electrical appendices (and installation box) is necessary

\*6: It is not possible to use 2 wireless remote controllers. Combination of BRC1E63 (main) and BRC7M (sub) is available

# SPECIFICATIONS

			25	35	50	60	71	
Model Name		Indoor unit	FFA25AVM	FFA35AVM	FFA50AVM	FFA60AVM	FFA71AVM	
		Outdoor unit	RZAC25EVM	RZAC35EVM	RZAC50EVM	RZAC60EVM	RZAC71EVM	
Power supply			1 Phase, 220-240V / 220-230V, 50 / 60Hz					
Cooling capacity <sup>1,3</sup> Rated (Min. - Max.)		kW	2.5 (1.2-3.0)	3.5 (1.3-4.0)	5.0 (1.5-6.0)	6.0 (1.5-7.0)	7.1 (1.5-7.6)	
Heating capacity <sup>2,3</sup> Rated (Min. - Max.)		kW	3.2 (1.0-3.7)	4.2 (1.0-4.3)	6.0 (1.4-7.0)	7.1 (1.4-8.0)	8.0 (1.4-8.4)	
Power consumption	Cooling <sup>1</sup>	kW	0.54	0.88	1.11	1.50	2.00	
	Heating <sup>2</sup>	kW	0.75	1.09	1.55	1.90	2.25	
EER	Cooling	kW/kW	4.63	3.98	4.50	4.00	3.55	
COP	Heating	kW/kW	4.27	3.85	3.87	3.74	3.56	
AEER*	Cooling		4.47	3.89	4.43	3.95	3.52	
ACOP*	Heating		4.16	3.79	3.82	3.70	3.53	
TCSPF* (Cooling) Commercial / Residential	Hot		6.08 / 5.61	5.71 / 5.27	6.19 / 5.77	5.91 / 5.49	5.35 / 4.97	
	Average		5.92 / 4.78	5.70 / 4.67	6.19 / 5.21	6.00 / 5.02	5.46 / 4.60	
	Cold		6.18 / 4.72	6.04 / 4.73	6.54 / 5.29	6.40 / 5.18	5.85 / 4.78	
HSPF* (Heating) Commercial / Residential	Hot		4.75 / 4.75	4.65 / 4.64	4.87 / 4.87	4.72 / 4.71	4.53 / 4.52	
	Average		4.52 / 4.39	4.33 / 4.13	4.56 / 4.34	4.41 / 4.19	4.23 / 4.02	
	Cold		4.14 / 3.93	3.87 / 3.58	4.12 / 3.84	3.98 / 3.70	3.84 / 3.58	
Indoor unit	Colour	Unit	—					
		Decoration panel	White					
	Airflow rate (H / M / L)	ℓ/s	150 / 133 / 108	167 / 142 / 108	200 / 167 / 125	250 / 208 / 158	258 / 208 / 158	
		m³/min	9.0 / 8.0 / 6.5	10.0 / 8.5 / 6.5	12.0 / 10.0 / 7.5	15.0 / 12.5 / 9.5	15.5 / 12.5 / 9.5	
	Sound pressure level <sup>4</sup> (H / M / L)		dB(A)	31.0 / 28.5 / 25.0	34.0 / 30.5 / 25.0	39.0 / 34.0 / 27.0	44.0 / 40.0 / 32.0	44.5 / 40.0 / 32.0
	Sound power level		dB(A)	48	51	56	60	
	Dimensions (H×W×D)	Unit	mm	260×575×575 (+63) <sup>5</sup>				
		Decoration panel	mm	46×620×620				
	Machine weight	Unit	kg	16		17.5		
		Decoration panel	kg	2.8				
	Certified Operation range	Cooling	°CWB	14 to 23				
		Heating	°CDB	10 to 30				
Outdoor unit	Colour		Ivory White					
	Compressor	Type	Hermetically sealed swing type					
		Motor output	kW	0.8		1.3		
	Refrigerant charge (R-32)		kg	0.73 (Charged for 10 m)		1.50 (Charged for 10 m)		
	Sound pressure level <sup>4</sup>	Cooling / Heating	dB(A)	46 / 47	48 / 48		49 / 52	53 / 55
	Sound power level		dB(A)	59	61	62	64	67
	Dimensions (H×W×D)		mm	550×675×284		695×930×350		
	Machine weight		kg	28		54		
	Certified Operation range	Cooling	°CDB	-10 to 46				
		Heating	°CWB	-15 to 18				
	Piping connections	Liquid (Flare)		mm	ø 6.4			
		Gas (Flare)		mm	ø 9.5		ø 12.7	
Drain		Indoor unit	mm	VP20 (I.Dø20×O.Dø26)				
		Outdoor unit	mm	ø 16.0 (Hole)				
Max. interunit piping length			m	20 (Equivalent length 45)		30 (Equivalent length 45)		
Max. installation level difference			m	15		20		
Heat insulation			Both liquid and gas piping					

Note :

<sup>1</sup>Rated cooling capacities are based on the following conditions: Indoor temp., 27°CDB, 19.0°CWB; outdoor temp. 35°CDB, 24°CWB. Equiv. refrigeration piping, 5.0 m (horizontal).

<sup>2</sup>Rated heating capacities are based on the following conditions: Indoor temp., 20°CDB, 15°CWB; outdoor temp., 7°CDB, 6°CWB. Equiv. refrigeration piping, 5.0 m (horizontal)

<sup>3</sup>Capacities are net, including a deduction for cooling (an addition for heating) for indoor fan motor heat.

<sup>4</sup>The operation sound is measured in anechoic chamber. If it is measured under the actual installation conditions, it is normally over the set value due to environmental noise and sound reflection.

<sup>5</sup>Dimension including Electric box.

★ Values based on GEMS determination 2019.

**TCSPF: Total Cooling Seasonal Performance Factor**

**HSPF: Heating Seasonal Performance Factor**

In simple terms, TCSPF & HSPF represents the ratio of the Total Cooling & Heating capacity of the air-conditioner relative to the Total energy consumed by the air-conditioner during the Total Cooling & Heating operation periods in a year.

Whereas the previous index of AEER & ACOP was calculated using only one representative outdoor temperature (35°C for cooling and 7°C for heating), the new index of TCSPF & HSPF uses a broader range of annual outdoor temperatures\* as stipulated in AS/NZS 3823.4.1:2014.

Further, the annual outdoor temperatures are based on zoning Australia/ New Zealand into three distinct climate zones (Hot/Average/Cold). This allows you to determine the performance efficiency of different air-conditioners by comparing their TCSPF & HSPF within the same climate zone.

\* There are two kinds of annual outdoor temperatures and it's different for residential and commercial use.

## Indoor unit

No.	Name of option	Remark	Kit name				
			FFA25AVM	FFA35AVM	FFA50AVM	FFA60AVM	FFA71AVM
1	Grid ceiling panel		BYFQ60CAW				
2	Sensor kit		BRYQ60AAW				
3	Sealing material of air discharge outlet		BDBHQ44C60				
4	Fresh air intake kit		KDDQ44XA60				
5	Replacement long-life filter		KAF441C60				
6	Remote controller	Wireless type      Heat pump	BRC7M530W				
7	Navigation remote controller	Wired type <sup>1</sup> "Nav Ease"	BRC1E63				
8	Stylish remote controller	Wired type <sup>1</sup>	BRC1H61W (White) / BRC1H61K (Black)				
9	Central remote controller		DCS302CA61				
10	Unified ON / OFF controller		DCS301BA61				
11	Schedule timer		DST301BA61				
12	intelligent Touch Controller		DCS601C51				
13	Adaptor for wiring		BRP11B62				
14	Wiring adaptor for electrical appendices(2)		KRP4AA53				
15	Installation box for adaptor PCB		KRP1BB101				
16	Remote sensor (for indoor temperature)		BRCS01A-6				
17	Wireless LAN connecting adaptor		BRP072C42-1				

Note :

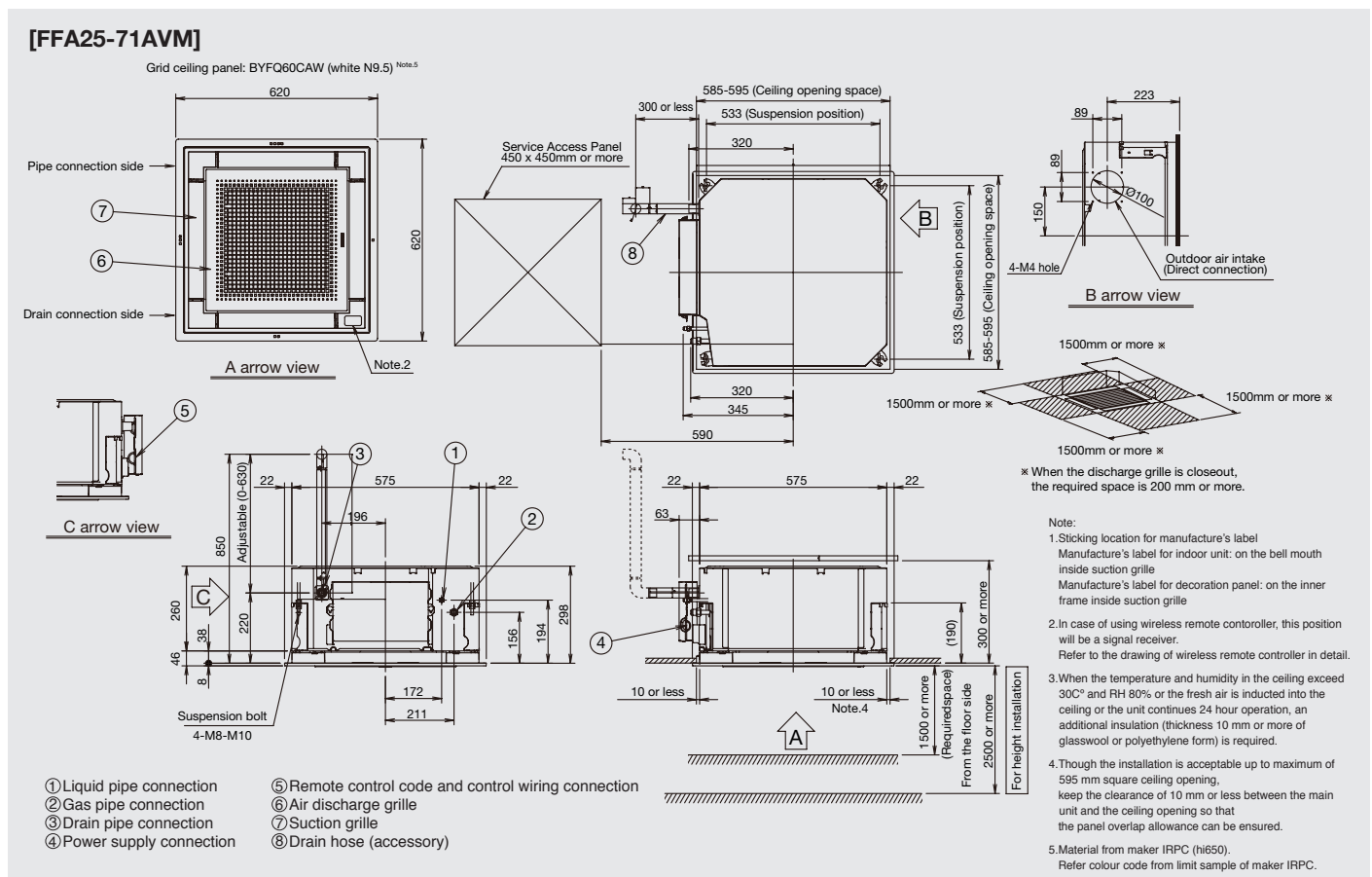
<sup>1</sup>Wiring for wired remote controller should be obtained locally.

## Outdoor unit

No.	Name of option	Remark	Kit name				
			RZAC25EVM	RZAC35EVM	RZAC50EVM	RZAC60EVM	RZAC71EVM
1	Central drain plug		KKP937A4			KKP937A4	
2	Air direction adjustment grille		KPW937F4			KPW5G112	
3	Demand adaptor		BRP070A43			BRP070A44	

## DIMENSIONS (Unit: mm)

### COMPACT MULTI FLOW CEILING MOUNTED CASSETTE TYPE / Grid ceiling panel

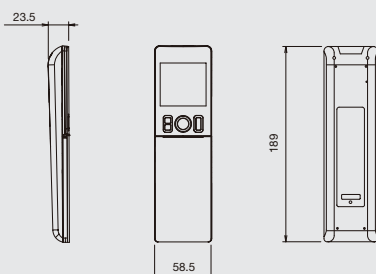


## REMOTE CONTROLLER

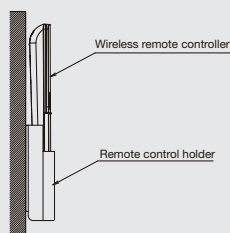
### 《Wireless type》

#### BRC7M530W

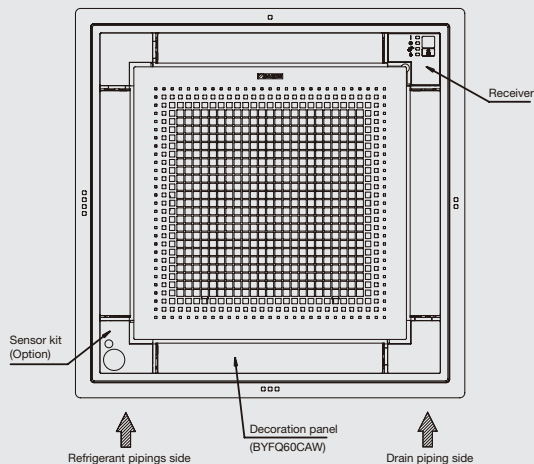
##### • Remote controller dimensions



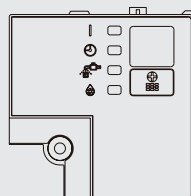
##### • Remote controller holder installation procedure (Installation to wall surface)



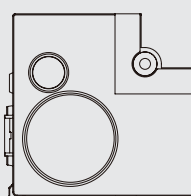
##### • Receiver installation procedure



##### • Receiver detail



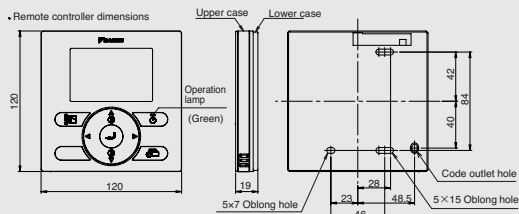
##### • Sensor kit detail (BRYQ60AAW)



### 《Wired type》 • Remote controller dimensions

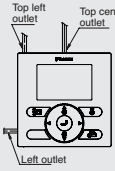
#### BRC1E63

##### • Remote controller dimensions



##### • Installation method

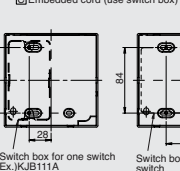
###### ① Exposed cord



###### ② Embedded cord



###### ③ Embedded cord (use switch box)



###### Conduit



##### Note)

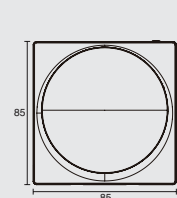
1. Remote controller cord and staple are not attached. They are field supplied parts.
2. If the hole size is too large or the location is not proper, the hole may come out from the remote controller.

##### Specifications of cord

Type	Vinyl cord with sheath or cable (insulated thickness: 1mm or more)
Size	0.75~1.25 mm <sup>2</sup>
Total length	500 m

#### BRC1H61W (K)

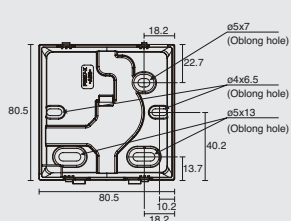
##### • Front view of upper casing



##### • Side view of upper casing



##### • Front view of lower casing



##### • Side view of lower casing

